



# MAPLE LEAF



First Presbyterian Church of Maple Plain

March 2025

*A gentle answer turns away wrath,  
but a harsh word stirs up anger.  
— Proverbs 15:1*

## March Foodshare Kickoff

*Sue Prok*

FPC's Deacons are once again coordinating the annual Minnesota Food-Share March Campaign to help restock local food shelves. Faith communities like FPCMP play a large role in ensuring that food shelves have the supplies they need.



All funds and food items collected during the month of March are benefiting the WeCAN Mobile Market and the Mound Westonka Food Shelf. Checks should be made directly to WeCAN or the Westonka Food Shelf, not FPC. If you prefer to bring food items, they can be placed in the narthex. Thank you for your generosity.



## Blood Drive: March 18, 2025

*Sue Prok*

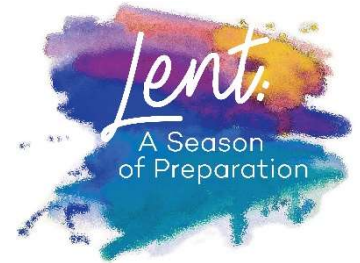
The Red Cross is experiencing a severe shortage in blood donations, and they have asked FPC to host a third blood drive this year. Our drive will be March 18<sup>th</sup> from 1 to 7pm. If you would like to donate, go to:

<https://www.redcrossblood.org/give>, or talk to Sue Prok to sign you up. If you've never donated before, this is a great spot to try it for the first time!

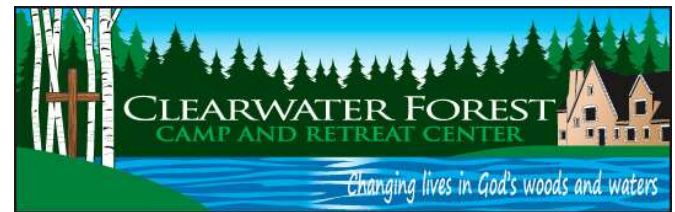
## Shared Services for Lent

*Pastor Dan & Dave Tillman*

We are again partnering with Calvin Presbyterian Church for our midweek Lenten and Passion Week services. We will be alternating between Calvin and FPCMP



for our Ash Wednesday service, Lenten Wednesday suppers and services, and Maundy Thursday and Good Friday services. See page 2 for more detail about these worship and supper activities. If you are interested in helping out with the suppers we will host, see a signup sheet in the fellowship hall.



## 2025 Women's Retreat

*Julie Lokken*

Planning for the 2025 Women's Retreat is underway! This year's retreat will be held March 28-30 in Leaning Tree Lodge at Clearwater Forest. Heather Baker and Blair Voigt have offered to lead the planning and curriculum this year. Gina Anderson and Victoria Wise will coordinate the meals. There is a signup sheet in Fellowship Hall for those interested in participating and for arranging carpools. If you'd like to help, please contact Julie Lokken.



# FROM THE PASTOR

## Finding God in Plain Sight

We often divide the world into the sacred and secular; into what is holy or mundane; special and ordinary. Because of this, we tend to look for God in the places we deem sacred, holy, and special: a cathedral, a place with a particular personal meaning, or beautiful landscapes like mountain ranges or a stunning beach sunset.

All of that is, of course, well and good. Whatever draws our attention to the magical and mystical presence of God is worth cherishing. But at the same time, we also hold the belief that God is everywhere: above all, in all, and through all (Eph. 4:6). Which is to say that God should be (and is) just as recognizable or present in the secular, mundane, and ordinary—in an ordinary building, any place you happen to be, and in every rock, twig, or grain of sand.

There is an idea that I love about the communion table we use to celebrate the sacrament of the Lord's Supper. It goes something like this: This table (communion table) is holy because all tables are holy. Yet, all tables can't be holy until we are one table as holy.

Another way to put it is that God is equally present at all tables, nourishing us, gracing us, and binding us together. But before you can recognize God's presence at every table and every

meal, you must first recognize God's presence at one particular table and meal.

Let me give another example.

Brother Lawrence, a French monk living in the 17<sup>th</sup> century, wrote a spiritual classic called *Practicing the Presence of God*. In it, he talks about how he began to find God in the most ordinary of tasks. Key to this practice, as I understand it, is to realize that the work we do doesn't matter as much as the love we put into it. Small things, done with great love, become sacred tasks. Seeing the world from this vantage point, Brother Lawrence talks about how washing the dishes at the monastery would open him up to the presence of God because even this simple/boring/uncomfortable job could be done with great love for his fellow monks.

During our Wednesday services for Lent, Pastor TJ and I will continue to explore this idea using a book by Jill Duffield, *Lent in Plain Sight: A Devotion through Ten Objects*. Each week, we explore one ordinary object and see how it, too, can remind us of the daily presence of God in our lives. Doing so might just make us all look at the world differently; not as a place where only a few places, people, and things are holy, but where the sacred can be found all around us, in nearly every moment of every day.

I hope you can join us this Lent for some or all of the Wednesday services.

Grace and Peace,  
Dan

### Shared Worship Services

Date	What	Where	Supper	Service	Ordinary Object
3/5	Ash Wednesday	FPCMP	(None)	6:30pm	Ash
3/12		Calvin	6:00pm	6:30pm	Bread
3/19		FPCMP	6:00pm	6:30pm	Cross
3/26		Calvin	6:00pm	6:30pm	Coins
4/2		FPCMP	6:00pm	6:30pm	Shoes
4/9		Calvin	6:00pm	6:30pm	Oil
4/17	Maundy Thursday	FPCMP	(None)	7:00pm	Towels
4/18	Good Friday	Calvin	(None)	7:00pm	Thorns

## March Worship Schedule

March 2 – Transfiguration  
Luke 9:28-36

March 5 – Ash Wednesday  
Luke 9:51-62 – Jesus Turns to Jerusalem

March 9 – Good Samaritan  
Luke 10:25-42

March 16 – Lament over Jerusalem  
Luke 13:1-9, 31-35

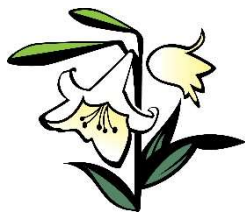
March 23 – Lost Sheep, Coin, Son  
Luke 15:1-32

March 30 – Rich Man and Lazarus  
Luke 16:19-31

## Adorn the Sanctuary with Easter Plants

*Victoria Wise*

Once again, you can purchase Easter Plants in memory or acknowledgment of loved ones. It is a wonderful tradition that helps brighten the sanctuary as we honor our loved ones.



They will be displayed in the sanctuary on Palm Sunday through Easter morning for worship service. You will be able to take your plant home after Easter worship service.

Easter Plant options and prices will be on a poster in the Narthex, along with order forms and envelopes. Make checks payable to FPC. The deadline is March 16<sup>th</sup>.

If you have questions, see Luann Tillman.



## Parent Workshop

Beyond the Birds and the Bees  
with Dr. Heidi. March 6 10:30-  
12:30pm

Beyond Birds and Bees is designed to help parents identify, understand, and communicate their own family values, as well as understand the importance of taking an active role in their child's sexual education and development. Dr. Croatt provides parents with research on when to initiate conversations and how to answer questions based on child developmental stages, and offers communication techniques for how to make these conversations more comfortable and natural. The goal is for families to feel more confident taking an active role in their child's sexual education in hopes of raising sexually healthy children and adults. Join us on March 6, 10:30am -12:30pm

## Men's Breakfast: 3/8, 8:00am

*Dave Tillman*

We'll have good food, lots of conversation, just enough reflection, and end in prayer. Be thinking of any prayer requests that you might want to share with the group. Mark Anderson will be cooking.

# Puerto Rico Service Trip Debrief

*Dave Tillman*

On February 9<sup>th</sup> during fellowship, the team that went to Puerto Rico to help with reconstruction after hurricanes in previous years summarized the trip, telling stories about the people and places that we experienced. Maybe you can join us next year.



# Snacks, Scrabble & Trivia, Oh My!

*Julie Lokken*

Thank you to everyone who participated in our Snacks & Scrabble Appetizer Potluck on February 23<sup>rd</sup>. It was great to have an extended time of fellowship together and to share some tasty snacks! If you enjoy a little friendly but not-too-serious competition, watch for an opportunity to participate in a trivia night at a local brewery/eatery after the Lenten season.



# FPC Men's Retreat 2025

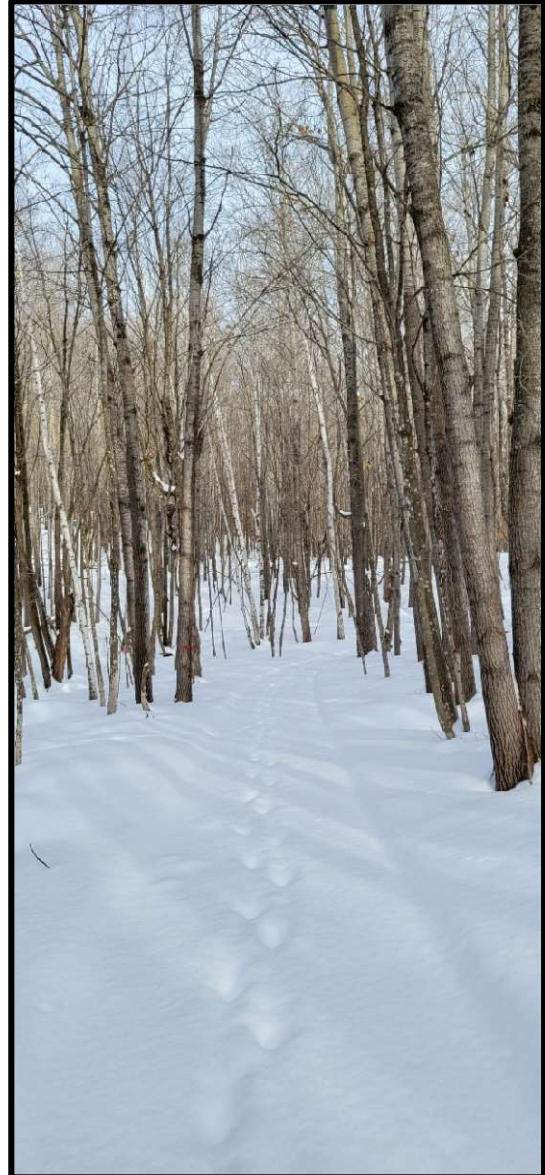
*Dave Tillman*

On the weekend of February 14-16, ten of us from FPC spent a relaxing weekend in Eagle Lodge at Clearwater Forest Campground and Retreat Center. Our study was about improving relationships and understanding each other. The weather was sunny, with a high in the mid-teens—a nice day for a walk or skiing the trails.

We helped the camp by cleaning out the basement at Eagle Lodge (in preparation for painting). This included hauling out piles of junk and sweeping/vacuuming. Masks were necessary.

Next year, we are planning the Men's Retreat for January 23-25, 2026. This is a few weeks earlier, but we can hopefully get better attendance by avoiding Valentine's Day and President's Day weekend. Mark your calendar now!





# March 2025

## Worship Assistants

### Coffee & Fellowship

2	Sue Prok	2
9	Jeff & Sue Potter	9
16	Julie Lokken	16
23		23
30	The Voigts	30

### Liturgist

Kyle Schmidt & Julie Lokken
Todd Barkus
Mark Prok

### Ushers/Greeters

2	Carol Anderson	2
9	Helen Chun	9
16	Sue Prok	16
23		23
30		30

### Tech Team

Mark Prok
Julie Lokken

### Snow Shoveling

2	Kyle Schmidt	2
9		9
16		16
23		23
30		30

### Sunday School Teachers

No Class
Julie Lokken
Blair Voigt

### Communion: March 9

Communion Prep: 3/9  
Communion Servers: 3/9

Victoria Wise  
Betsy Wolfe & Jill Schmidt

*If you can help on Sundays, sign up in the fellowship hall.*



## Birthdays & Anniversaries

### Birthdays

6	Julie Maas-Kusske	21	Brenda Barkus
7	Dorothy Caster	27	Henry Jauhiainen Tauscheck
7	Pastor Dan Voigt	28	Mike Skinner
10	Sue Potter	28	Jonathan Tauscheck

*Anniversaries - no anniversaries that we are aware of.*





# MARCH

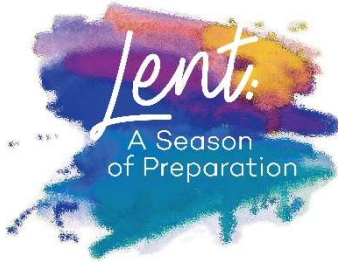
Sunday	Monday	Tuesday	Wednesday	Thursday	Friday	Saturday
<b>23</b> 9:30am Worship 10:30am Fellowship - Snacks & Scrabble Appetizer Potluck 10:50am Christian Ed	<b>24</b> 11:00am - 7:00pm Childrens Music Academy	<b>25</b> 10:00am Holy Yoga, in-person & streaming on Zoom	<b>26</b> 9:00am - 3:00pm West Village School 7:00pm Choir Practice	<b>27</b> 9:00am - 3:00pm West Village School	<b>28</b>	<b>1</b>
<b>2</b> 9:30am Worship 10:30am Fellowship 10:50am Christian Ed	<b>3</b> 11:00am - 7:00pm Childrens Music Academy	<b>4</b> 10:00am Holy Yoga, in-person & streaming on Zoom	<b>5</b> 9:00am - 3:00pm West Village School 6:30pm Ash Wednesday Service @ FPC	<b>6</b> 9:00am - 3:00pm West Village School	<b>7</b>	<b>8</b> 8:00am Men's Breakfast
<b>9</b> 9:30am Worship 10:30am Fellowship 10:50am Christian Ed	<b>10</b> 11:00am - 7:00pm Childrens Music Academy	<b>11</b> 10:00am Holy Yoga, in-person & streaming on Zoom 6:30pm Deacons Meeting	<b>12</b> 9:00am - 3:00pm West Village School 6:00pm Lenten Soup Supper @ Calvin 6:30pm Lenten Service @ Calvin	<b>13</b> 9:00am - 3:00pm West Village School	<b>14</b>	<b>15</b>
<b>16</b> 9:30am Worship 10:30am Fellowship 10:50am Christian Ed	<b>17</b> 11:00am - 7:00pm Childrens Music Academy	<b>18</b> 10:00am Holy Yoga, in-person & streaming on Zoom 1:00pm - 7:00pm Red Cross Blood Drive 4:00pm Session Meeting	<b>19</b> 9:00am - 3:00pm West Village School 6:00pm Lenten Soup Supper @ FPC 6:30pm Lenten Service @ FPC	<b>20</b> 9:00am - 3:00pm West Village School	<b>21</b>	<b>22</b>
<b>23</b> 9:30am Worship 10:30am Fellowship 10:50am Christian Ed	<b>24</b> 11:00am - 7:00pm Childrens Music Academy	<b>25</b> 10:00am Holy Yoga, in-person & streaming on Zoom	<b>26</b> No WV School 6:00pm Lenten Soup Supper @ Calvin 6:30pm Lenten Service @ Calvin	<b>27</b> No WV School	<b>28</b> Women's Retreat @ Clearwater Forest	<b>29</b> Hal Wildung Funeral Service Women's Retreat @ Clearwater Forest
<b>30</b> Women's Retreat @ Clearwater Forest 9:30am Worship 10:30am Fellowship 10:50am Christian Ed	<b>31</b> 11:00am - 7:00pm Childrens Music Academy	<b>1</b> 10:00am Holy Yoga, in-person & streaming on Zoom	<b>2</b> 9:00am - 3:00pm West Village School 6:00pm Lenten Soup Supper @ FPC 6:30pm Lenten Service @ FPC 7:15pm Choir Practice	<b>3</b> 9:00am - 3:00pm West Village School	<b>4</b>	<b>5</b>

The latest calendar is available at:  
[CatchOurSpirit.org/calendar](http://CatchOurSpirit.org/calendar)



First Presbyterian Church  
558 County Road 110  
Maple Plain, MN 55359

Address correction requested.



March 2025

## First Presbyterian Church of Maple Plain

763-479-2158

Office Hours: Tuesdays 9am – 2pm  
Wednesdays 9am – 2pm  
Thursdays 9am – 2pm

*Pastor*  
*Administrative Assistant*  
*Choir Director*  
*Clerk of Session*  
*Deacons Chair*  
*Prayer Chain Leader*  
*Maple Leaf Editor*

Rev. Dan Voigt  
Julie Lokken  
David Tillman  
Mark Prok  
Sue Prok  
Todd Barkus  
Dave Tillman

[pastor@CatchOurSpirit.org](mailto:pastor@CatchOurSpirit.org)  
[office@CatchOurSpirit.org](mailto:office@CatchOurSpirit.org)  
[ChoirDirector@CatchOurSpirit.org](mailto:ChoirDirector@CatchOurSpirit.org)  
[markprok59@outlook.com](mailto:markprok59@outlook.com)  
[mprok@frontiernet.net](mailto:mprok@frontiernet.net)  
[prayerchain@CatchOurSpirit.org](mailto:prayerchain@CatchOurSpirit.org)  
[MapleLeaf@CatchOurSpirit.org](mailto:MapleLeaf@CatchOurSpirit.org)

Website:  
[www.CatchOurSpirit.org](http://www.CatchOurSpirit.org)

